

# 貫通型端子台



Through-type Terminal Block

ピッチ/Pitch 8.89mm

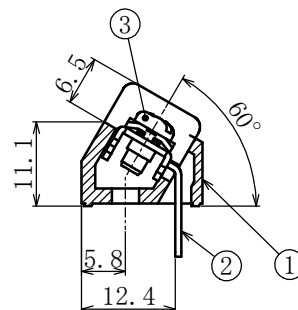
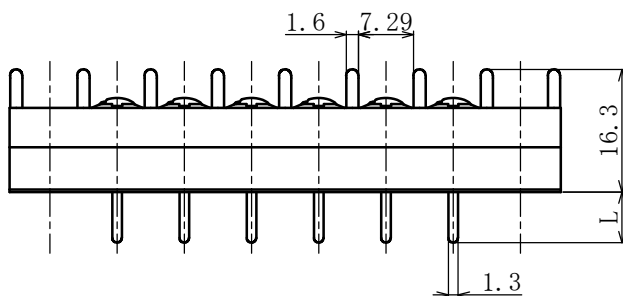
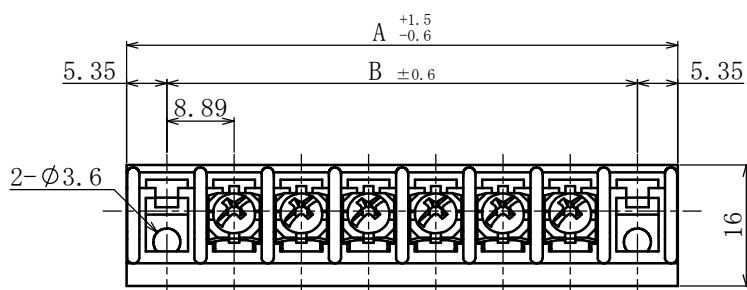


|                               |   |
|-------------------------------|---|
| 型名<br>Type Number             | F 2 3 0 1 A Z                             |
| 定格<br>Rating                  | AC250V 10A                                |
| 絶縁抵抗<br>Insulation Resistance | DC500V 1000MΩ以上<br>DC500V 1000MΩ and over |
| 耐電圧<br>Withstands Voltage     | AC2000V 1分間以上<br>AC2000V 1minute and over |
| ねじ径<br>Screw Diameter         | M3  |
| 適合電線<br>Compatible Wire       | 0.75mm <sup>2</sup>                       |

一般公差/General Tolerance ±0.5

尺度/Scale 1/10 単位/Unit mm

| 呼び/Nominal | L |
|------------|---|
| 4L         | 4 |
| 7L         | 7 |
| 9L         | 9 |



- ・注文方法: 型名 — リード長 L — 極数 P
- ・Ordering Form: Type No. Lead Wire Length(L) No. of Poles(P)
- ・結線ビス: 締付けトルク0.6N・mです。
- ・Connection screw: Tightening torque is 0.6N・m.
- ・その他オプション \*ショートピース (F2136)
- ・Other Options \*Jumper (F2136)

## 仕様/Specifications.

| 部番 Part No. | 名称 Part Name  | 材質 Material | 規格 Standard | 寸法 Size   | 処理 Treatment          | 備考 Remarks    |
|-------------|---------------|-------------|-------------|-----------|-----------------------|---------------|
| 1           | モールド Mold     | PBT         | UL          |           |                       | 青色 Blue       |
| 2           | 導電金具 Terminal | 黄銅 Brass    | C2680R      | 板厚 t0.8   | スズメッキ Tin-Plated      |               |
| 3           | 結線ビス Screw    | 鉄 Steel     | SWCH・SPCC   | M3×0.5×6L | ニッケルメッキ Nickel-Plated | フラーソソビス Type② |

| 極数/Poles | 1P    | 2     | 3     | 4     | 5     | 6     | 7     | 8     | 9     | 10     | 11     | 12     | 13     |
|----------|-------|-------|-------|-------|-------|-------|-------|-------|-------|--------|--------|--------|--------|
| A        | 28.48 | 37.37 | 46.26 | 55.15 | 64.04 | 72.93 | 81.82 | 90.71 | 99.60 | 108.49 | 117.38 | 126.27 | 135.16 |
| B        | 17.78 | 26.67 | 35.56 | 44.45 | 53.34 | 62.23 | 71.12 | 80.01 | 88.90 | 97.79  | 106.68 | 115.57 | 124.46 |

| 極数/Poles | 14     | 15     | 16     | 17     | 18     | 19     | 20     | 21     | 22     | 23     | 24     | 25     |
|----------|--------|--------|--------|--------|--------|--------|--------|--------|--------|--------|--------|--------|
| A        | 144.05 | 152.94 | 161.83 | 170.72 | 179.61 | 188.50 | 197.39 | 206.28 | 215.17 | 224.06 | 232.95 | 241.84 |
| B        | 133.35 | 142.24 | 151.13 | 160.02 | 168.91 | 177.80 | 186.69 | 195.58 | 204.47 | 213.36 | 222.25 | 231.14 |