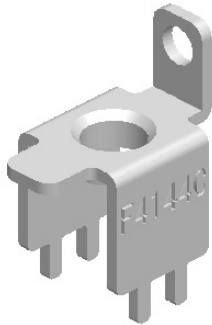


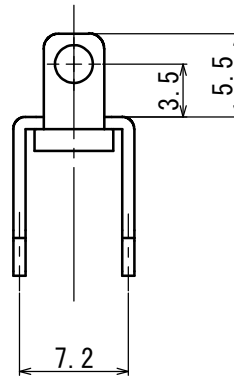
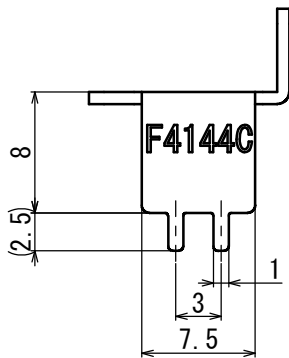
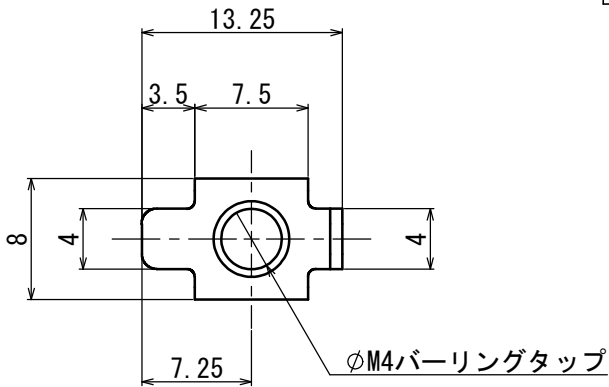
基板端子



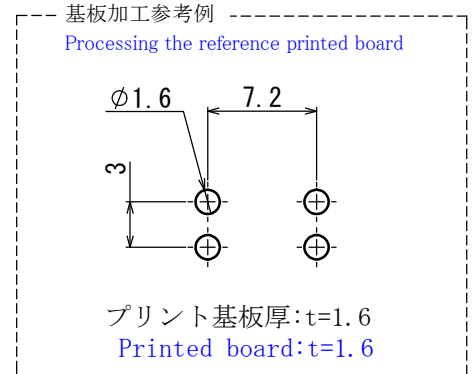
Printed board Terminal



| | | | |
|--------------------------------------|----------------------|----------------------|-------------------|
| 型名 Type Number | F 4 1 4 4 C | | |
| 定格 Rating | 3 0 A ~ 5 0 A | | |
| ねじ径 Screw Diameter | M 4 | | |
| 使用可能電流 Usable Current | 3 0 A | 4 0 A | 5 0 A |
| 適合電線 Compatible Wire | 3. 5 mm ² | 5. 5 mm ² | 8 mm ² |
| 推奨圧着端子 Recommended Crimp Terminal | R 3. 5-4 | R 5. 5-4 | R 8-4 |



一般公差 / General Tolerance ±0.5
 尺度 / Scale $\frac{2}{1}$ 単位 / Unit mm



・注文方法: **型番** --- (下表の型番を御参照下さい。)

・Ordering Form: Type No. (See the type number in the following table)

| 番号 Part No. | 名称 Part Name | 材質 Material | 寸法 Size | 規格 Standard | 処理 Treatment |
|-------------|-----------------------------|-------------|----------|-------------|-----------------------|
| 1 | 基板端子 Printed board Terminal | 黄銅 Brass | 板厚 t=0.8 | — | スズメッキ Tin-Plated |
| 2 | 結線ビス Screw | 黄銅 Brass | M4 | — | ニッケルメッキ Nickel-Plated |

| 型番 Type No. | 納入される物 Product Delivered |
|-------------|---|
| F4144C | 基板端子のみ(ビスなし) Printed board terminal (for M4) only (W/O screws) |
| F4144CS | 基板端子M4×6Lバインドビス(Type⑧)組付 Printed board terminal+M4×6L binding head attached (Type⑧) |

| 対応可能ビス Compatible screw | 材質 Material | 処理 Treatment | 形状 Shape |
|---|-------------|-----------------------|----------|
| PW, SWセムスパインド M4×7L Type③With Plain(Flat)washer and spring lock washer M4×7L | 黄銅 Brass | ニッケルメッキ Nickel-Plated | Type③ |
| | 鉄 steel | | |
| SWセムスパインド M4×7L Type④With spring lock washer M4×7L | 黄銅 Brass | ニッケルメッキ Nickel-Plated | Type④ |
| PW, SWセムスナベ M4×8L Type⑤With Plain(Flat)washer and spring lock washer M4×8L | 黄銅 Brass | ニッケルメッキ Nickel-Plated | Type⑤ |
| | 鉄 steel | | |
| SWセムスナベ M4×8L Type⑦With spring lock washer M4×8L | 黄銅 Brass | ニッケルメッキ Nickel-Plated | Type⑦ |